

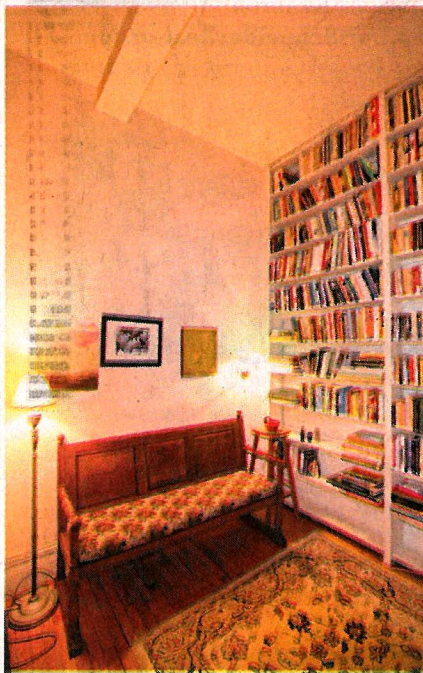
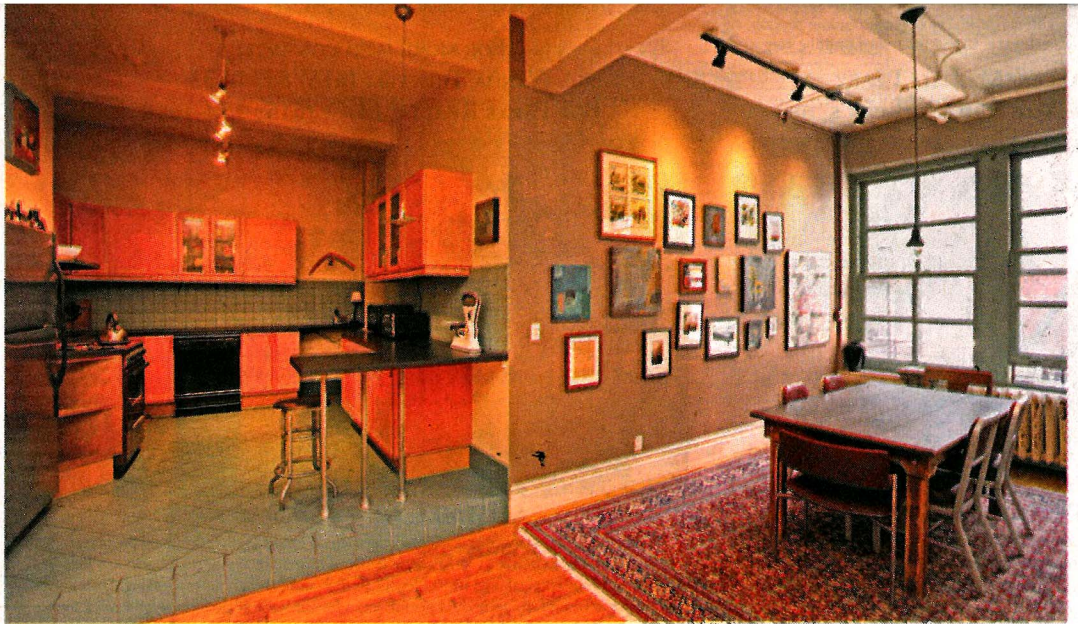
# The New York Times

June 19, 2011

## ON THE MARKET

VIVIAN S. TOY

With Marcelle S. Fischler, Suzanne Hamlin and Lisa Prevost



### Gramercy Area Loft

## \$1,749,000

**MANHATTAN:** 112 East 19th Street (between Irving Place and Park Avenue South), #3R

A two-bedroom two-bath co-op with a third interior room and a library in a prewar building with keyed elevator access. Lee Ann Jaffee, Stribling & Associates (646) 613-2739; [www.stribling.com](http://www.stribling.com)

**MAINTENANCE:** \$1,656 a month

**PROS:** The sprawling living space is divided by a partial wall with a decorative fireplace. Original wood doors add a warm accent. The kitchen is immense, and the unit has two large walk-in closets.

**CONS:** The apartment looks across to the back of other buildings. The bathrooms have dated wood paneling and tile. The master bedroom is reached by going through the kitchen.