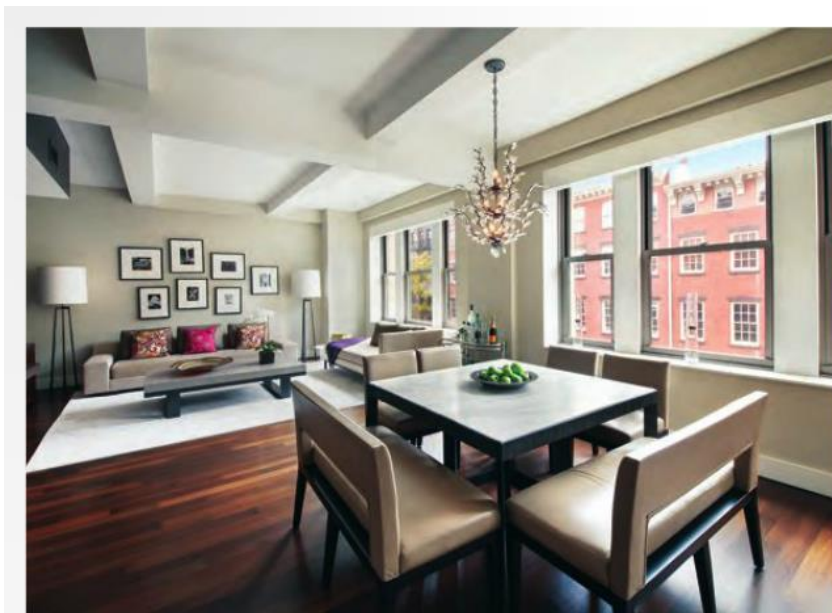


SCENE

IN NEW YORK

SPOTLIGHT WEST VILLAGE AND GREENWICH VILLAGE

This month, *SCENE* takes a look inside some of the most impressive West Village and Greenwich Village homes on the market.



147 Waverly Place \$4,995,000

This rare doorman condo is located at the epicenter of the West Village on a charming, tree-lined street. The serene spacious loft-style residence—in one of Downtown's most loved buildings—features a timeless and sophisticated design, with a south-facing, 27-foot-wide living/dining room overlooking historic townhouses and gardens. The kitchen features stainless steel counters, a vented hood, a wine refrigerator and appliances by Sub-Zero, Wolf and Miele. There is a large master suite and well-appointed, windowed, five-piece master bath, complete with a steam shower, a soaking tub and radiant-heated floors. The building offers a full-time doorman, super and beautifully landscaped rooftop deck with stunning skyline views. *Mary Ellen Cashman, Stribling & Associates, 646.613.2616 / Sean Turner, Stribling & Associates, 646.613.2619*